

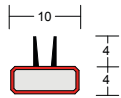
# TS SEALS

LP1004TS LP1504TS, LP2004TS, LP2504TS

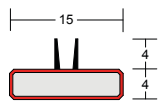
Our TS door seal with double elastomeric fins offers acoustic, smoke + fire protection. Available in a choice of sizes to cover 30 and 60 minute applications.



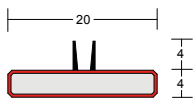
ACOUSTIC, SMOKE + FIRE SEALS



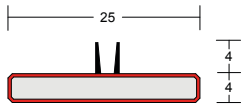
LP1004TS



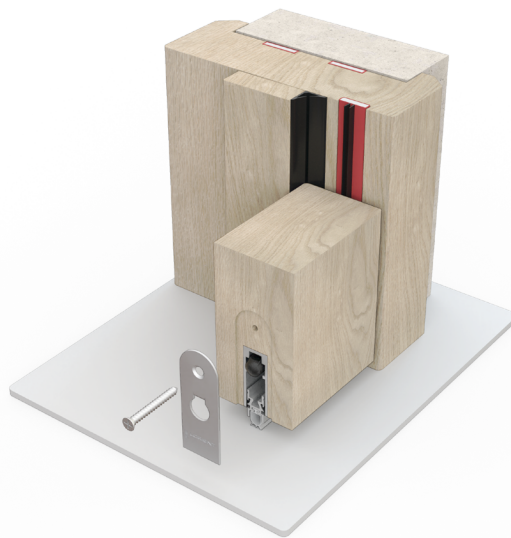
LP1504TS



LP2004TS



LP2504TS



FD30 example:  
TS seal with Batwing® to comply with BS 9999 (Shown with LAS8001 si)



FD60 example:  
TS seal (Shown with with LP1504 fire seal & LAS8001 si + cladding kit)

▶▶ **Note:** It's essential to consult the manufacturer to determine exactly what configuration of seal & size of seal have been tested.

## SYSTEM SPECIFICATIONS

### Test evidence

- ▶ Fire: BS 476-22:1987.
- ▶ Fire: BS EN 1634-1:2008.
- ▶ Smoke: BS 476-31.1:1983.
- ▶ Assessment: CNA/F14171.
- ▶ Acoustic: BS EN ISO 10140-2:2010.
- ▶ Durability: 100,000 cycles.

### Performance

- ▶ Meets smoke requirements BS 9999:2017.
- ▶ Protects against sound, smoke, and fire.
- ▶ Low frictional resistance for ease of door operation.

### Location

- ▶ Single and double leaf doors.

### Min/max gap size

- ▶ 3mm/4mm

### Size

- ▶ 10 x 4mm, 15 x 4mm, 20 x 4mm, 25 x 4mm.
- ▶ Other sizes available, please ask for details.

### Use with

- ▶ Any architectural seals.

### Seal material

- ▶ PVC encased sodium silicate and flexible elastomeric fins.

### Fixing

- ▶ Heavy duty self-adhesive backing tape.

### Standard lengths

- ▶ 1m and 2.1m.
- ▶ Other lengths to special order.

### Finishes

- ▶ Available in a range of standard colours, plus woodgrain and metallic finishes available to special order.
- ▶ Black fins as standard.

### Certification