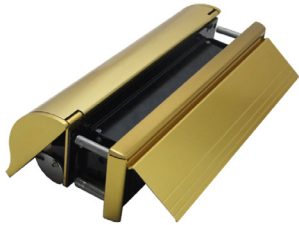


## RJ008 LETTERPLATE FITTING GUIDE

FD30

certifire  
(CF5688)



### CONTENTS

- Letterplate with pre-drilled holes
- 4 x 29mm bolts (44mm door)
- 4 x 44mm bolts (54mm door)
- 6 x Screws
- 2 x 15mm bolts with dry adhesive
- Fitting guide

### TOOLS REQUIRED

- Tape measure
- Pencil or marker
- Saw (power/hack)
- Jigsaw
- Drill
- Screw driver
- Knife
- Router



KM670828



For more information please call:

**+44 (0)1626 834252**

### STEP 1

Mark off the aperture position for the letterplate at a minimum of 250mm and a maximum of 1700mm from the base of the door. Dimension from the middle of the aperture.

### STEP 2

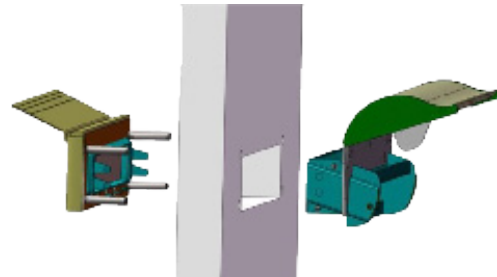
Mark the position for the aperture and holes for the securing posts following the dimensions of the door cutting instructions.

### STEP 3

Cut out aperture with jigsaw or router etc.

### STEP 4

Position letterplate into the aperture, ensuring the curved profile is on the inside of the door.



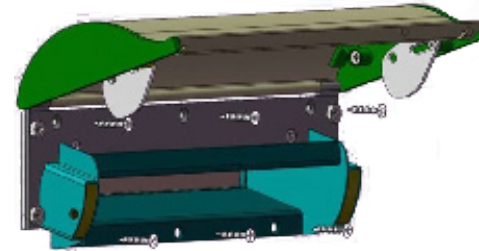
### STEP 5

Secure the back plate to the door using 4 x 29mm bolts.



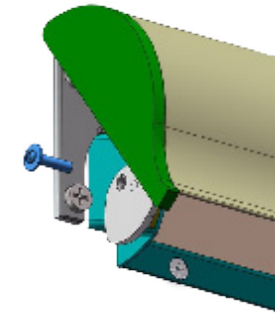
### STEP 6

Securely fit the letterplate to the door by screwing in the six screws.



### STEP 7

Secure the cowl by fixing the cam to the letterplate body using the 15mm bolts with ferrule.



### PLEASE NOTE

The screw has a dry coated adhesive that is activated when threaded into the hole. The screw should not be removed once fitted.

### IMPORTANT

The letterplates should be cleaned monthly with a moist cloth and not with any forms of cleaning agents.

### DISCLAIMER

Recommendations as to methods, use of materials and construction details are based on the experience and knowledge of Lorient and are given in good faith as a general guide and service to designers, contractors and manufacturers.

V2



Lorient Polyproducts Ltd  
Endeavour House  
Fairfax Road  
Heathfield Ind Estate  
Newton Abbot  
Devon TQ12 6UD  
United Kingdom

+44 (0)1626 834252  
www.lorientgroup.com

All rights reserved. No part of this fitting guide may be reproduced, stored in a retrieval system, or transmitted in any means, electronic, mechanical, photocopying, recording or otherwise without the written permission of Lorient Polyproducts Limited.  
© Lorient Polyproducts Ltd 2019

## RJ008 LETTERPLATE FITTING GUIDE

FD30

certifire  
(CF5688)



### CONTENTS

- Letterplate with pre-drilled holes
- 4 x 29mm bolts (44mm door)
- 4 x 44mm bolts (54mm door)
- 6 x Screws
- 2 x 15mm bolts with dry adhesive
- Fitting guide

### TOOLS REQUIRED

- Tape measure
- Pencil or marker
- Saw (power/hack)
- Jigsaw
- Drill
- Screw driver
- Knife
- Router



KM670828

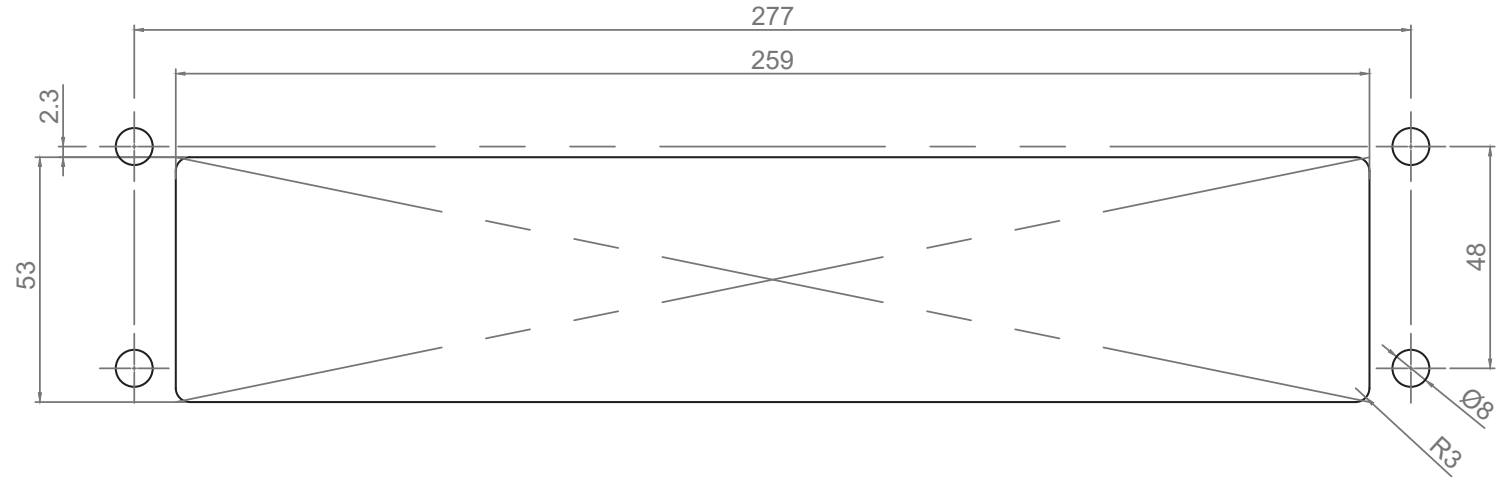
Secured by Design



Official Police Security Initiative

For more information please call:

**+44 (0)1626 834252**



V2



Lorient Polyproducts Ltd  
Endeavour House  
Fairfax Road  
Heathfield Ind Estate  
Newton Abbot  
Devon TQ12 6UD  
United Kingdom

+44 (0)1626 834252  
[www.lorientgroup.com](http://www.lorientgroup.com)

All rights reserved. No part of this fitting guide may be reproduced, stored in a retrieval system, or transmitted in any means, electronic, mechanical, photocopying, recording or otherwise without the written permission of Lorient Polyproducts Limited.  
© Lorient Polyproducts Ltd 2019