

AIR TRANSFER GRILLES

LVN25S

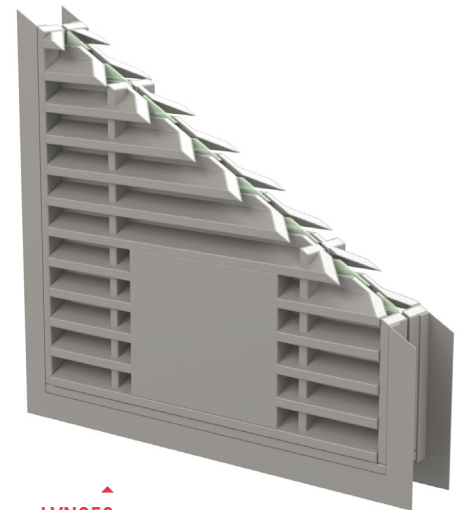
HIGH PERFORMANCE NON-VISION FIRE + SMOKE AIR TRANSFER GRILLE

The LVN25S provides a unique solution to the problem of containing both fire and smoke in emergency conditions yet offering good air transfer through doors in everyday use. Using the same intumescent louvred slat configuration as the LVN25, but incorporating an electro mechanically operated smoke shutter mechanism. Can provide up to 60 minutes fire and smoke resistance.

Key benefits

- ▶ Contains cold smoke + toxic gases remote from source of fire
- ▶ Simple installation
- ▶ Auto reset + failsafe
- ▶ Safe low DC voltage
- ▶ Status reporting + auto-cycling via Talkback Damper Control Monitor (DCM)
- ▶ Optional audio warning facility
- ▶ Connects to fire panel +/- or BMS
- ▶ BMS alarm notification via Alarm Monitoring System (AMS)
- ▶ Nominal 5mA current open/closed
- ▶ Max 200mA in operation
- ▶ Allows bi-directional airflow
- ▶ Louvred slats give privacy.

FIRE + SMOKE RESISTANT AIR TRANSFER GRILLES



LVN25S

STANDARD SIZES AVAILABLE (MM)

WIDTH	198	248	298	348	398
HEIGHT	198	248	298	348	398

Other non-standard sizes may be available - please ask for details.

SYSTEM SPECIFICATIONS

Test evidence

- ▶ Fire: BS 476-20 & 22:1987.
- ▶ Smoke: BS 476-31.1:1983 (shutterplate).

Performance

- ▶ Can be used to provide up to 60 minutes resistance to fire + cold smoke.
- ▶ EI rating of 60 minutes in accordance with BS 476 (Test report: Applus 19/19940-1428).

Size

- ▶ Width: 200mm - 400mm (in 50mm increments).
- ▶ Height: 200mm - 400mm (in 50mm increments).

Thickness

- ▶ 2 pieces x 25mm.

Free area

- ▶ Approx 30% free area.

Finish

- ▶ Silver as standard.

Application

- ▶ Suitable for FD30 & FD60 doors, greater than 50mm.
- ▶ Note: in applications where high levels of humidity or wetness are anticipated, please speak to our Technical Department for alternatives.

Orientation

- ▶ LVN25S must be used in the vertical plane.

Positional requirements

- ▶ Certifire: The upper edge of the grille shall be no higher than 800mm from floor level.
- ▶ Test Report Applus 19/19940-1428: The upper edge of the grille shall be no higher than 1350mm from floor level.

Material

- ▶ Rigid PVC slats with an intumescent core.
- ▶ Steel flange.
- ▶ Electro mechanically operated smoke shutter mechanism.

Fixing

- ▶ Each air transfer grille is manufactured 2mm less than a nominal aperture size to provide clearance when installed in a duct or other aperture of the same nominal dimensions. e.g. a 198mm x 198mm nominal size air transfer grille will suit a 200mm x 200mm aperture.
- ▶ Screwed into door with an aperture lined with Lorient intumescent liner (B24402).

Use with

- ▶ Talkback damper control system.
- ▶ Conductor hinges.
- ▶ Optional Alarm Monitoring System (AMS) and battery backup.

Accreditation

certifire
(CF564)