

## AIR TRANSFER GRILLES

# LVC40

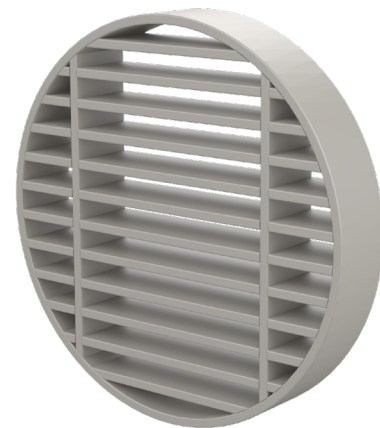
### HIGH PERFORMANCE CIRCULAR VISION STYLE INTUMESCENT AIR TRANSFER GRILLE

A high performance, standard vision intumescent air transfer grille for doors, walls and ducts. Ideal for toilet extraction systems in residential premises, hotels and many other buildings. The design allows space savings, ease of installation and avoids the need for operational function checks.



#### Key benefits

- ▶ No need for “round to square to round” adapters
- ▶ Fits directly into ducts, doors or wall apertures
- ▶ No moving parts
- ▶ Excellent fire integrity + insulation performance
- ▶ Not prone to clogging
- ▶ No access panels required
- ▶ No moving parts
- ▶ Robust construction
- ▶ No maintenance



LVC40

#### STANDARD DIAMETER SIZES AVAILABLE (MM)

DIAMETER 148 198 248 298 348 398 448 598

Other non-standard sizes may be available - please ask for details.

FIRE + SMOKE RESISTANT AIR TRANSFER GRILLES

#### SYSTEM SPECIFICATIONS

##### Test evidence

- ▶ Fire: BS 476-20 & 22:1987.
- ▶ Fire: BS EN 1634-1:2014.
- ▶ Fire: BS EN 1634-5:2017.
- ▶ Fire: NEN 6069:2005+A1:2016.

##### Performance

- ▶ Can be used to provide up to 60 minutes resistance to fire.
- ▶ EI rating of 120 minutes when used in conjunction with a cover grille. Please speak to our Technical Department for details.

##### Size

- ▶ Up to 600mm diameter (nominal to suit standard PVC pipes or steel ducts)

##### Thickness

- ▶ 40mm.

##### Free area

- ▶ Low sound power level +.

##### Application

- ▶ Suitable for doors, walls and ducts.
- ▶ Please note: in applications where high levels of humidity or wetness are anticipated, it is recommended that an LVHC44 product should be employed.

##### Orientation

- ▶ LVC40 products can be installed either vertically or up to 300mm diameter horizontally.

##### Positional requirements (Certifire)

- ▶ The upper edge of the grille shall be no higher than 3000mm from floor level.
- ▶ The lower edge of the grille shall be no closer than 400mm to floor level.

##### Material

- ▶ PVC slats with an intumescent core.

##### Finish

- ▶ Silver as standard.

##### Fixing

- ▶ Each air transfer grille is manufactured 2mm less than a nominal aperture size to provide clearance when installed in a duct or other aperture of the same nominal dimensions. e.g. a 198mm diameter nominal size damper will suit a 200mm diameter aperture.
- ▶ Screwed and bedded in Lorient intumescent sealant.

##### Use with

- ▶ Metal cover grille (optional).

##### Accreditation

**certifire**  
(CF564)