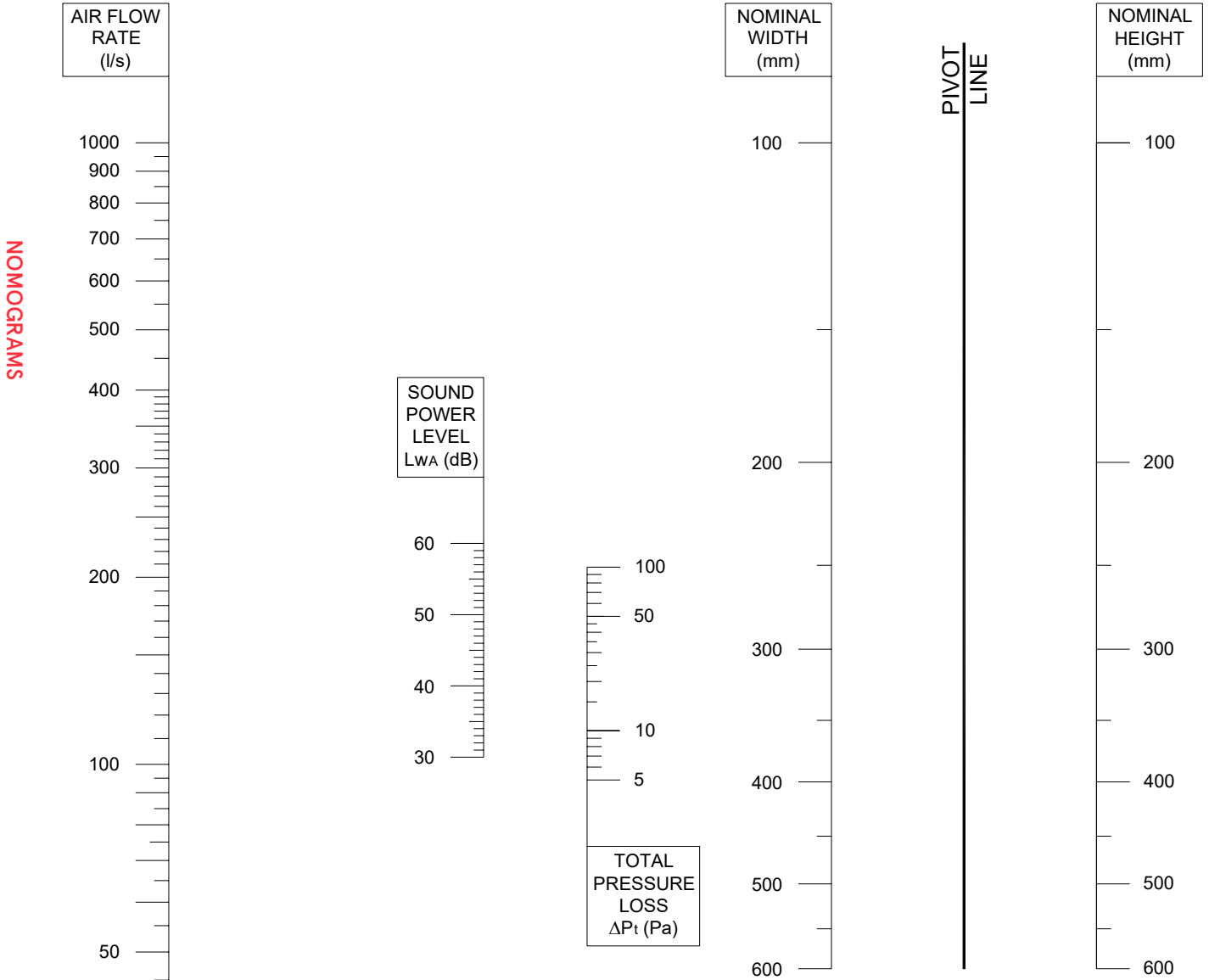


LVV40S NOMOGRAM FOR WALL MOUNTED APPLICATIONS

► **Performance Criteria:** The acoustic + aerodynamic performance is based on a wall mounted application with a Lorient Polyproducts LVV40S fire + smoke rated intumescent air transfer grille fitted with cover grilles.



Example:

Determine the total pressure drop ΔP_t (Pa) and the radiated sound power level $L_{w,A}$ (dB) for a Lorient Polyproducts 200 x 200 LVV40S intumescent damper for a volume flow rate of 60 (l/s).

On the chart, draw a straight line from 200 on the nominal width axis to 200 on the nominal height axis. At the intersection point with the pivot line, draw a line to 60 (l/s) on the flow rate axis. The radiated sound power $L_{w,A}$ (dB) and total pressure drop ΔP_t (Pa) may now be read directly.

Type: Lorient Polyproducts LVV40S 200 x 200
Flow rate (l/s): 60
Total pressure drop ΔP_t (Pa): 23
Radiated sound power $L_{w,A}$ (dB): 34

