

FIRE DOOR 1

LVV40 AIR TRANSFER GRILLE WITH COVER GRILLES INTO TIMBER FIRE DOOR

DESCRIPTION

- | | |
|---|---|
| 1 | FD30: 44mm thick fire door
FD60: 54mm thick timber fire door |
| 2 | Pressed steel cover grille to door fasteners -
25mm wood screws |
| 3 | Pressed steel cover grille |
| 4 | LVV40 intumescent air transfer grille |
| 5 | Intumescent air transfer grille to door fasteners -
25mm wood screws |
| 6 | Use sealant to bed air transfer grille into door |

In order to comply with CF564, the upper edge of the grille shall be no higher than 3000mm from floor level. The lower edge of the grille shall be no closer than 200mm to floor level. Consult door manufacturers before cutting out in relation to permissible aperture sizes and locations

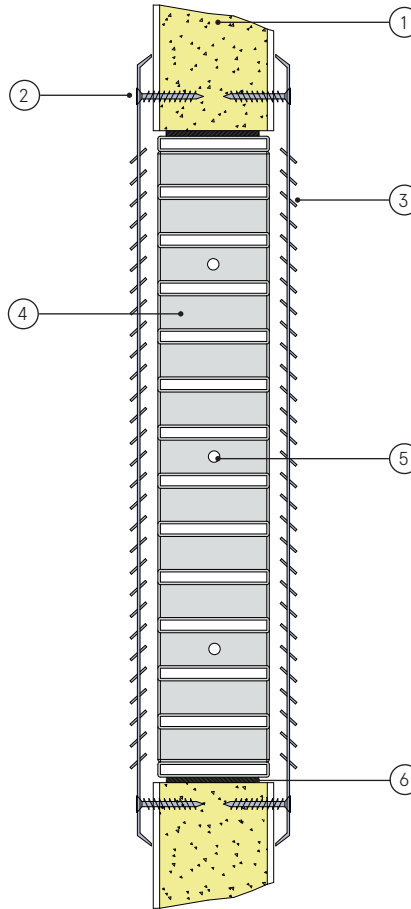
If the door leaf core does not comprise a solid timber lamel core (i.e. a core of chipboard, flaxboard etc.), the aperture provided in the leaf should be lined to full width using hardwood, with a minimum density of 650kg/m³ and a thickness of at least 6mm. This hardwood liner may be omitted should the leaf have been tested.

CONTENTS

- LVV40 air transfer grille
- Cover grille (optional)

TOOLS REQUIRED

- Power drill
- Screw driver
- 25mm wood screws
- Lorient intumescent sealant



Note: Screw holes based on 600mm square grille. Location and number may vary depending on the size of the grille. Max centres 200mm.

certifire
(CF564)

LVV40 into a fire door FD30/60

Fire Resistance in accordance with

BS 476-22:1987

Approval Ref

WF185829/A
Certifire CF564

Max single cell size

600mm x 600mm

LVV40 air transfer grilles are supplied 2mm less than the nominal size e.g. a 300mm x 300mm is actually 298mm x 298mm.

INSTALLATION INSTRUCTIONS

- ▶ Ensure that cutting an aperture in the door will not detract from the fire integrity of the door. Contact the manufacturer to establish the maximum size and optimum position.
- ▶ Cut the aperture to the required size with a maximum gap all around of 3mm.
- ▶ Apply Lorient intumescent sealant to the inside faces of the aperture.
- ▶ Fit the LVV40 into the aperture and ensure that it is positioned equidistant from each face and parallel from both faces of the door.
- ▶ Fit retaining wood screws through pre-drilled holes in LVV40 outer uprights into door.
- ▶ Clean off surplus sealant and ensure outer edge of LVV40 is fully sealed.
- ▶ Position pressed steel cover grille centrally over one face of the LVV40 and fix using 25mm wood screws.
- ▶ Repeat to other face if two cover grilles are to be fitted.
- ▶ **Note: Fixings supplied by others.**