



# WALL 19

## LVH44S FIRE + SMOKE AIR TRANSFER GRILLE FITTED INTO FIRE RATED FLEXIBLE WALLS

### DESCRIPTION

1	FR Flexible wall
2	Air transfer grille casing fixing screw
3	Mineral board facing
4	Pressed steel cover grille
5	LVH44S fire + smoke air transfer grille
6	Actuator cable
7	Servo driven actuator
8	Intumescent sealant to bed casing into wall
9	Cover grille fixing screws into wall plugs.

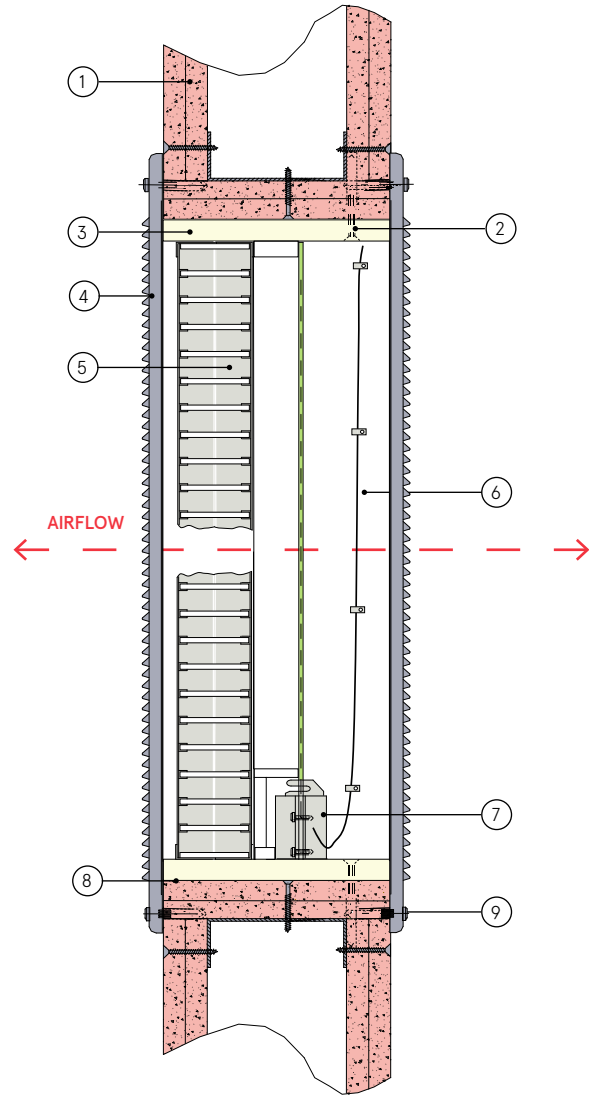
### CONTENTS

- LVH44S fire + smoke resistant air transfer grille
- Cover grille (optional)
- Wiring instructions

### TOOLS REQUIRED

- Cable clips
- Screws (3.5 x 42mm)
- Lorient intumescent sealant

WALL MOUNTED SYSTEMS



### LVH44S fitted into fire rated flexible wall FR120S

#### Fire Resistance in accordance with

BS 476-22:1987

#### Approval Ref

WFRC C121316

#### Max single cell size

600mm x 600mm  
(640mm x 640mm overall)

LVH44S comes in a non-combustible housing which means the actual size of the product is approx. 40mm larger. E.g. a 300mm x 300mm damper is actually 340mm x 340mm due to the housing.

### INSTALLATION INSTRUCTIONS

- ▶ LVH44S fire + smoke resistant air transfer grilles are supplied ready assembled in a mineral board casing. Care must be taken not to damage the casing during installation.
- ▶ Cut the aperture to the required size with a maximum gap all around of 5mm. Frame in aperture faces. Ensure final aperture is square and correct to size.
- ▶ If the LVH44S is already fitted with cover grilles these must be removed.
- ▶ Drill the casing for fixing screws to the wall, minimum of 4 number will be needed.
- ▶ Trial fit the LVH44S assembly into the aperture and ensure that it can be positioned within the section of the wall, without jamming or twisting.
- ▶ Position the LVH44S assembly so that one face is flush with one face of the wall. Mark around the LVH44S casing at the opposite face to determine the amount needed to be removed to give a flush fit on both faces. Also mark the positions of the wall fixing screws through the holes drilled.
- ▶ Establish the actuator cable run and make the necessary cut outs to suit.
- ▶ Remove the LVH44S assembly from the wall aperture. Trim the air transfer grille casing to the marked length.
- ▶ Apply intumescent sealant to aperture faces. Position LVH44S assembly square and flush to both faces of the wall while feeding the actuator cable into the selected position.
- ▶ Fit casing fixing screws to wall.
- ▶ Bed intumescent sealant around the LVH44S casing. Clean off surplus sealant and ensure outer edge of LVH44 casing is fully sealed.
- ▶ Fix actuator cable to casing with small cable clips to prevent it fouling the shutter plates.
- ▶ See wiring instructions.
- ▶ Carry out function check of the LVH44S by activation from the control unit.
- ▶ After satisfactorily completing the function test, position a pressed steel cover grille concentrically over one face of the LVH44S and fix using screws into wall plugs.
- ▶ Repeat to other face if two cover grilles are to be fitted.