



WALL 9

LVH44 MODULAR SYSTEM FITTED INTO RIGID WALL WITH Z SECTION FIXINGS

DESCRIPTION

- 1 Rigid wall
- 2 Lorient LVH44 intumescent air transfer grille
- 3 Lorient intumescent sealant around LVH44 perimeter to a maximum clearance of 25mm
- 4 **Fixing angle:** Full width galvanised steel Z sections (40 x 20 x 1mm thick minimum) around perimeter of LVH44 on both sides with 200mm fixing centres
- 5 Air transfer grilles slot together using tab system

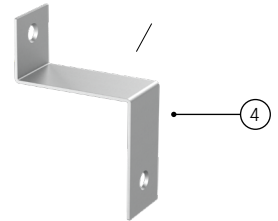
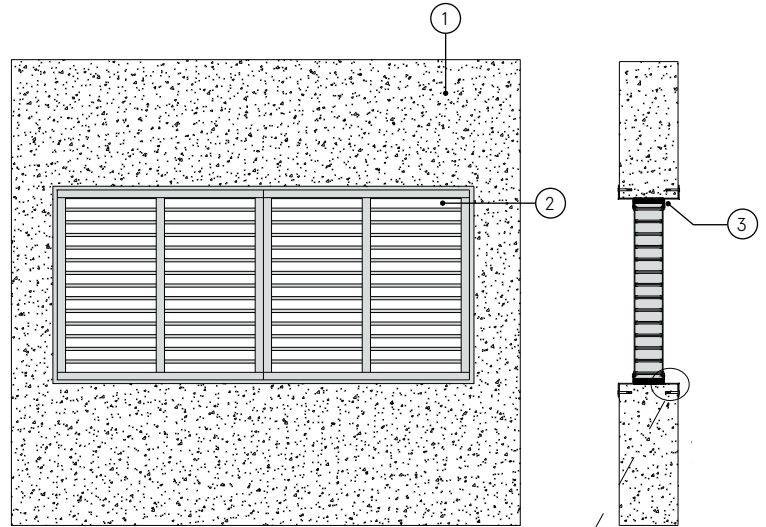
Note: For modular systems a 10mm (min) clearance around perimeter is needed

CONTENTS

- LVH44 air transfer grille
- Cover grille (optional)

TOOLS REQUIRED

- Z section
- Masonry anchors
- Self tapping screws (3.5 x 16mm)
- Lorient intumescent sealant



WALL MOUNTED SYSTEMS

LVH44 modular systems for rigid wall with Z section fixings

FR120

Fire Resistance in accordance with

BS 476-22:1987

Approval Ref

WFRC 121316 (AW9)

Max size.

1200mm x 600mm

Larger sizes can be used with a different mounting detail.

LVH44 air transfer grilles are supplied 2mm less than the nominal size e.g. a 300mm x 300mm is actually 298mm x 298mm.

INSTALLATION INSTRUCTIONS

- ▶ Slide the LVH44 modules together ensuring a bead of Lorient intumescent sealant is used in between LVH44 modules.
- ▶ Secure tab with self tapping screws into LVH44.
- ▶ Fix the mounting Z sections onto the LVH44 using self tapping screws to **both sides of the modular air transfer grille.**
- ▶ Insert LVH44 into rigid wall opening (note: air transfer grille does not have to be centrally positioned in the opening).
- ▶ Fix the Z sections to the rigid wall with masonry anchors.
- ▶ Apply a bead of Lorient intumescent sealant to full depth around the perimeter of air transfer grille as shown (note: maximum clearance of 25mm applies).
- ▶ Connect ductwork (or cover grille) directly to wall using approved breakaway connections to ensure compliance.
- ▶ **Note: Fixings supplied by others.**