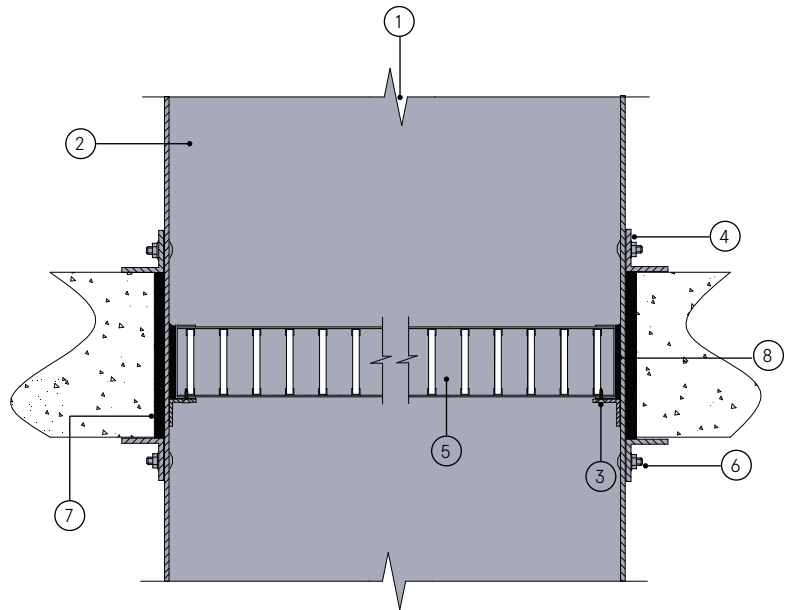


FLOOR 9

MASONRY FLOOR (DUCT TO DUCT)

DESCRIPTION

- | | |
|---|--|
| 1 | Independent duct fixing complete with breakaway joints |
| 2 | Light gauge galvanised casing |
| 3 | Damper retaining bracket 1mm galvanised steel fixed with short self tapping screws |
| 4 | Mounting angles |
| 5 | LVH44 air transfer grille inclusive of casing |
| 6 | M5 bolts for mounting angles. |
| 7 | Lorient intumescent sealant between casing and concrete slab |
| 8 | Lorient intumescent sealant between LVH44 and casing |



CONTENTS

- LVH44 air transfer grille

TOOLS REQUIRED

- Self tapping screws (3.2mm x 16mm)
- Masonry anchors
- Mounting flange
- Supporting bracket (20 x 20 x 1mm)
- Lorient intumescent sealant

▶▶ **Note:** If no reticulating ductwork is above the slab a protective and load-bearing grate is necessary.

Masonry floor (duct to duct)

FR120

Fire Resistance in accordance with

BS 476-22:1987

Approval Ref

WFRC C121316 (F1)

Max single cell size

1200 x 600mm

LVH44 air transfer grilles are supplied 2mm less than the nominal size e.g. a 300mm x 300mm is actually 298mm x 298mm.

INSTALLATION INSTRUCTIONS

- ▶ Fix a supporting bracket into the duct section either welded in place, or using M3 bolts.
- ▶ Fix the LVH44 into duct and seal around the perimeter with intumescent sealant.
- ▶ Fix to supporting angles with 3.2mm x 16mm self tapping screws.
- ▶ Check the mounting flange size is not less than twice the clearance between the LVH44 and opening.
- ▶ Fit one set of mounting flanges to the LVH44 assembly and lower the air transfer grille assembly into the floor opening. Ensure the assembly sits squarely and penetrates the floor opening.
- ▶ Fill the outside perimeter of the LVH44 with Lorient intumescent sealant.
- ▶ Fit mounting flanges on underside of floor using M5 bolts. Ensure flanges are hard against the floor and the fixings are adequately tightened. Check the LVH44 assembly sits squarely in the opening.
- ▶ Connect ductwork directly to floor using approved breakaway connections to ensure compliance.
- ▶ Apply a bead of Lorient intumescent sealant between casing and the floor (note: maximum clearance of 10mm applies).
- ▶ Ensure convenient access is provided for easy inspection and cleaning as necessary.