



WALL 13

LVC40 FITTED INTO RIGID WALL CONSTRUCTION

WALL MOUNTED SYSTEMS

DESCRIPTION

- 1 Rigid wall construction
- 2 Mortar facing over irregular surface
- 3 Pressed steel or aluminium cover grille
- 4 LVC40 air transfer grille
- 5 Air transfer grille fixing screws into wall plugs
- 6 Use Lorient intumescent sealant to bed air transfer grille into the wall
- 7 Cover grille fixing screws into wall plugs.

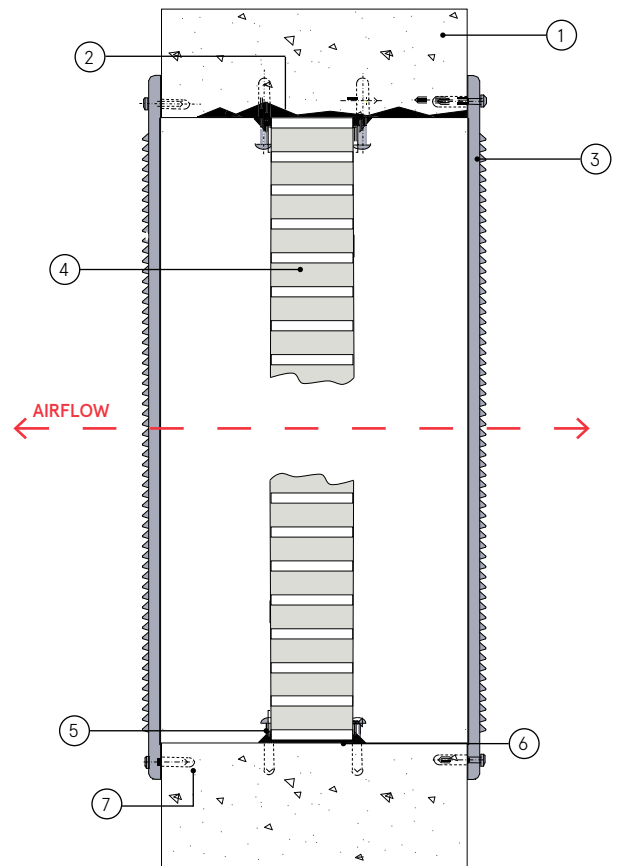
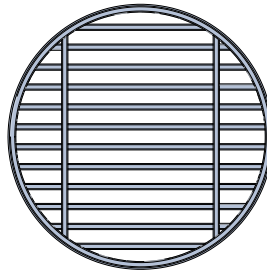
In order to comply with CF564, the upper edge of the grille shall be no higher than 3000mm from floor level. The lower edge of the grille shall be no closer than 400mm to floor level.

CONTENTS

- LVC40 air transfer grille
- Cover grille (optional)

TOOLS REQUIRED

- 4 x 50mm screws
- Wall plugs for 4 x 50mm screws
- Lorient intumescent sealant



LVC40 into a rigid wall

FR60

Fire Resistance in accordance with

BS 476-22:1987

Approval Ref

WF185829/A
Certifire CF564

Max single cell size

600mm x 600mm

LVC40 air transfer grilles are supplied 2mm less than the nominal size e.g. a 300mm x 300mm is actually 298mm x 298mm.

INSTALLATION INSTRUCTIONS

- ▶ Cut the aperture to the required size with a maximum gap all around of 5mm. If resulting aperture is out of square, irregular or oversized, make good with mortar.
- ▶ Trial fit the LVC40 into the aperture and ensure that it can be positioned within the section of the wall but not necessarily in the mid position, without jamming or twisting.
- ▶ Mark the position of drill points into wall either side of the LVC40.
- ▶ Remove the LVC40 from the wall aperture.
- ▶ Fix screws into wall with a minimum of 4 screws along the perimeter.
- ▶ Position LVC40 and repeat installation of screws on closest side of the LVC40.
- ▶ Bed in sealant around LVC40. Clean off surplus and ensure outer edge of the air transfer grille is fully sealed.
- ▶ Position cover grille centrally over one face of the LVC40 and fix using wall plugs supplied.
- ▶ Repeat to other face if two cover grilles are to be fitted.
- ▶ **Note: Fixings supplied by others.**