

# LAS9030

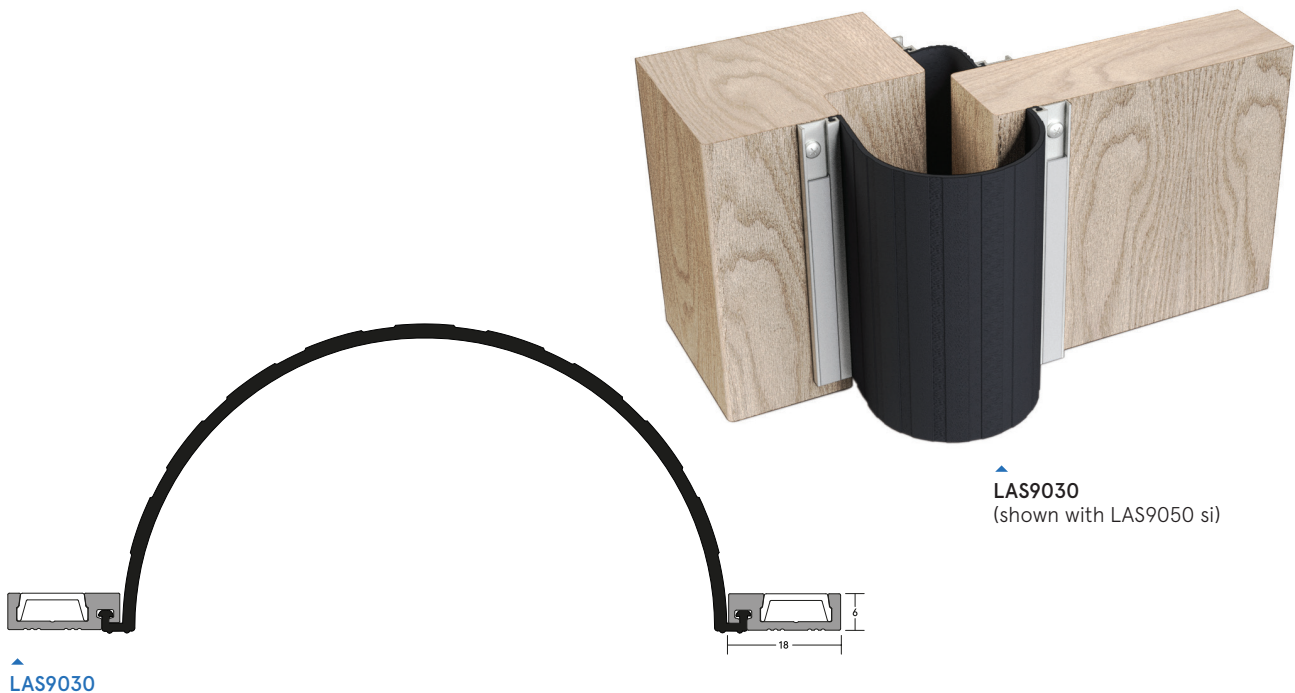
MEDIUM DUTY

A durable safety finger guard seal, which provides a deterrent to fingers becoming jammed on the hinge cavity side of a door. The product is fixed to the door and the jamb on the hinge cavity side. Trapping fingers in hinged doors can cause horrendous injuries. The risk is especially high in locations where young children are present. To be used in conjunction with LAS9050 si finger guard seal for the hinge knuckle side.



FINGER GUARDS / SPECIALITY SEALS

FINGER GUARD SEALS



▲ LAS9030

▲ LAS9030  
(shown with LAS9050 si)

## SYSTEM SPECIFICATIONS

### Test evidence

- ▶ Tested to BS 8613:2017 (Finger protection devices for pedestrian doors - Type A, Class 2).
- ▶ Durability: 300,000 cycles.

### Performance

- ▶ Protects against draught and light.

### Location

- ▶ Jambes of hinged doors. It can be used on doors with an opening of 170° when used with LAS9050 si. 180° can be obtained when LAS9030 is used on its own.

### Use with

- ▶ LAS7001 si perimeter seal and LAS8001 si drop seal (fully mortised).

### Seal material

- ▶ Black EPDM rubber.

### Standard lengths

- ▶ 2.1m. Other lengths to special order.

### Fixing

- ▶ Self-tapping wood screws are supplied (self-drilling and self-tapping screws for metal construction available on request)
- ▶ Fixing holes are pre-drilled and slotted to allow the seals to be adjusted and positioned accurately. PVC cover strips to conceal fixings are supplied.

### Finishes

- ▶ Silver anodised aluminium with grey cover strip and black gasket.
- ▶ Bronze anodised aluminium with black cover strip and black gasket.