

DROP SEALS

LAS8005 si

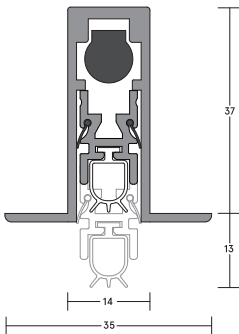
HEAVY DUTY **33dB**

A slimline, mortised automatic drop seal. It features a high efficiency mechanism, which lifts the seal clear of the floor as soon as the door is opened by a few millimetres; resulting in lower door operating forces. Requires no power connection. Self-levelling on uneven floors; seal height can be adjusted independently of fixing screws. Can be fitted to aluminium doors by door fabricators.

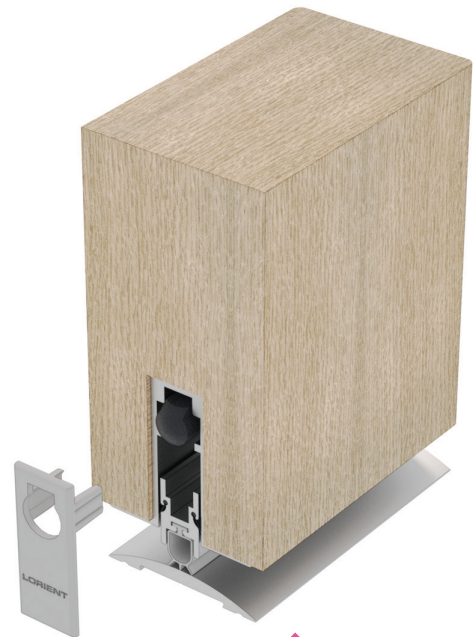


ID No.
270

DROP SEALS



LAS8005 si



LAS8005 si
(shown with LAS4002)

SYSTEM SPECIFICATIONS

Test evidence

- ▶ Acoustic: BS EN ISO 10140-2: 2010 (up to Rw 33dB).
- ▶ Smoke: BS EN 1634-3: 2004 & BS 476-31.1: 1983.
- ▶ Fire: BS 476: Pt.20/22: 1987 & BS EN 1634-1: 2014.
- ▶ Durability: 1 million cycles.

Performance

- ▶ Meets smoke requirement: BS 9999: 2017.
- ▶ Protects against sound, smoke, fire, draught, light and insects.
- ▶ Suitable for wheeled traffic.

Location

- ▶ Single swing, single and double leaf doors.
- ▶ For use on both right and left handed doors.

Use with

- ▶ Any perimeter seal. Any threshold plate.

Min/max gap size

- ▶ 1mm/13mm.

Seal material

- ▶ Grey silicone rubber.

Lengths

- ▶ 335mm, 435mm, 535mm, 635mm, 735mm, 835mm, 935mm, 1035mm, 1135mm and 1235mm.
- ▶ Note: Each length can be cut back to the next size down. 335mm can be cut back to 255mm.

Fixing

- ▶ This seal is mortised, and screw fixed via the flanges.

- ▶ Fixing screws are supplied; fixing holes are pre-drilled and countersunk.

Adjustment

- ▶ Self-levelling on uneven surfaces. Seal height can be adjusted independently of the fixing screws.

Finishes

- ▶ Silver anodised aluminium, with grey end caps and grey silicone rubber.
- ▶ Silver anodised aluminium, with black end caps and black silicone rubber.

Accreditations



(R27972)



(CF5179)