

DROP SEALS

LAS8002 si

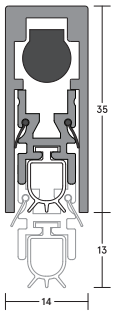
MEDIUM DUTY **31dB**

A slimline face-fixed or semi-mortised automatic drop seal. It features a high efficiency mechanism, which lifts the seal clear of the floor as soon as the door is opened by a few millimetres; resulting in lower door operating forces. Surface mounted application suitable for upgrading existing doors. Requires no power connection. Self-levelling on uneven floors; seal height can be adjusted independently of fixing screws.

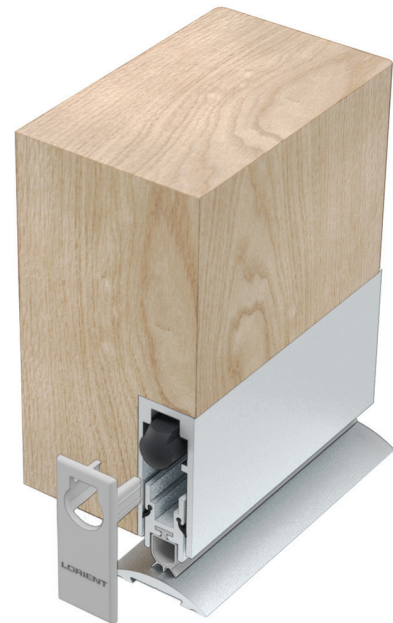


ID No.
129

DROP SEALS



▲
LAS8002 si



▲
LAS8002 si (shown with LAS4001)

SYSTEM SPECIFICATIONS

Test evidence

- ▶ Acoustic: BS EN ISO 10140-2: 2010 (up to Rw 31dB).
- ▶ Smoke: BS EN 1634-3: 2004 & BS 476-31.1: 1983.

Performance

- ▶ Meets smoke requirement: BS 9999: 2017.
- ▶ Suitable for use on timber fire doors.
- ▶ Protects against sound, smoke, fire, draught, light and insects. Suitable for wheeled traffic.

Location

- ▶ Single swing, single and double leaf doors.
- ▶ For use on both right and left handed doors.

Use with

- ▶ Any perimeter seal. Any threshold plate.

Min/max gap size

- ▶ 1mm/13mm.

Seal material

- ▶ Grey silicone rubber.

Standard lengths

- ▶ 335mm, 435mm, 535mm, 635mm, 735mm, 835mm, 935mm, 1035mm, 1135mm and 1235mm.
- ▶ Note: Each length can be cut back to the next size down. The 335mm can be cut back to 255mm.

Fixing

- ▶ LAS8002 si is face-fixed or semi-mortised onto the door bottom.
- ▶ Screw fix using screws and ferrules provided. Fit end caps.

Adjustment

- ▶ Self-levelling on uneven surfaces.
- ▶ Can be adjusted independently of the fixing screws.

Finishes

- ▶ Silver anodised aluminium with grey end caps and grey silicone rubber gasket.
- ▶ Bronze anodised aluminium with black end caps and black silicone rubber gasket.
- ▶ Please see page 69 for further finishes info.

Accreditations



(R27972)



(CF5179)