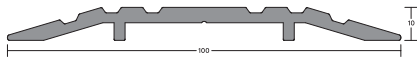


LAS4100 THRESHOLD PLATE FITTING GUIDE



LENGTH _____

CONTENTS

- LAS4100 threshold plate
- Stainless steel screws and plugs

TOOLS REQUIRED

- Tape measure
- Pencil or marker
- Saw, hand or power
- Power drill
- 4.5mm drill bit
- 6mm masonry bit
- Countersink
- Construction adhesive

INSTALLATION DETAIL

STEP 1

Remove the plate from the packaging and measure the door width, between jambs or door stops to determine plate length required.

STEP 2

Measure the threshold plate and mark the desired length (and profile if cutting around the door stop) with a pencil.

STEP 3

Cut the threshold plate and cover to the desired length using a saw.

STEP 4

Position the plate on the door sill in required location.

STEP 5: SCREW FIX

Using a power drill with a 4.5mm drill bit, create fixing holes in the plate at the required positions, countersink to ensure flush screw heads. With the plate in position, mark hole centres on floor.

Using masonry drill, create fixing holes. Clean away dust and insert supplied plugs.

Screw fix the threshold in place using the screws & plugs supplied.

STEP 5: ADHESIVE FIX

Apply adhesive to the back of the threshold plate and place it in the desired position.

NOTE

Where the threshold plate meets the door stop, sealant may be applied to prevent water ingress.

STEP 6

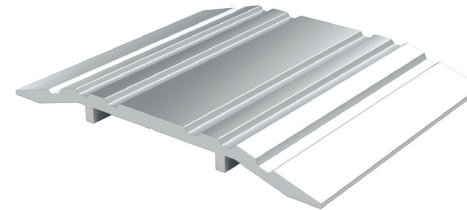
Check to ensure the door opens and closes with ease.

NOTE

For effective operation, the LAS4100 threshold plate requires a minimum of 12mm clearance between the door and the floor.

NOTE

Ensure that the installation of this product does not impede the opening or closing of the door.



NOTE

Recommendations as to methods, use of materials and construction details are based on the experience and knowledge of Lorient and are given in good faith as a general guide and service to designers, contractors and manufacturers.

Lorient reserves the right to make alterations or delete any installation detail without prior notice.

V1



Lorient Polyproducts Ltd
Endeavour House
Fairfax Road
Heathfield Ind Estate
Newton Abbot
Devon TQ12 6UD
United Kingdom

+44 (0)1626 834252
www.lorientgroup.com

All rights reserved. No part of this fitting guide may be reproduced, stored in a retrieval system, or transmitted in any means, electronic, mechanical, photocopying, recording or otherwise without the written permission of Lorient Polyproducts Limited.
© Lorient Polyproducts Ltd 2019