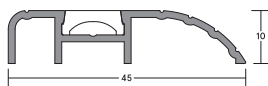


LAS4015 THRESHOLD PLATE

FITTING GUIDE



LENGTH _____

CONTENTS

- Aluminium threshold
- Semi-rigid snap cover
- Stainless steel screws and plugs

TOOLS REQUIRED

- Tape measure
- Pencil or marker
- Saw, hand or power
- Power drill
- 4.5mm drill bit
- 6mm masonry bit

INSTALLATION DETAIL

NOTE

It is not necessary to remove the door from its hinges.

STEP 1

Remove the plate from the packaging and measure the door width, between jambs or door stops to determine plate length required.

STEP 2

Measure the threshold plate and mark the desired length (and profile if cutting around the door stop) with a pencil.

STEP 3

Cut the threshold plate and cover to the desired length using a saw.

STEP 4

Position the plate on the door sill in required location.

STEP 5

Remove the cover strip and using a power drill with a 4.5mm drill bit, create fixing holes in the plate at the required positions.

STEP 6

With the plate in position, mark hole centres on floor. Using masonry drill, create fixing holes. Clean away dust and insert supplied plastic plugs.

STEP 7

Screw fix the threshold in place using the screws supplied, then push fit the cover strip to hide the screw heads.

NOTE

Where the threshold plate meets the door stop, sealant may be applied to prevent water ingress.

STEP 8

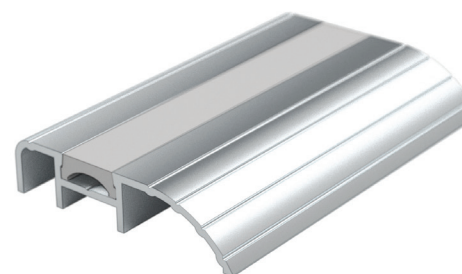
Check to ensure the door opens and closes with ease.

NOTE

For effective operation, the LAS4015 threshold plate requires a minimum of 12mm clearance between the door and the floor.

NOTE

Ensure that the installation of this product does not impede the opening or closing of the door.



NOTE

Recommendations as to methods, use of materials and construction details are based on the experience and knowledge of Lorient and are given in good faith as a general guide and service to designers, contractors and manufacturers.

Lorient reserves the right to make alterations or delete any installation detail without prior notice.



Gasketing materials for fire doors intended for application to wood and plastic covered composite and wood core doors rated up to 1.5 hours and listed steel frames and/or classified steel covered composite, hollow metal doors rated up to 3 hours.

V1



Lorient Polyproducts Ltd
Endeavour House
Fairfax Road
Heathfield Ind Estate
Newton Abbot
Devon TQ12 6UD
United Kingdom

+44 (0)1626 834252
www.lorientgroup.com

All rights reserved. No part of this fitting guide may be reproduced, stored in a retrieval system, or transmitted in any means, electronic, mechanical, photocopying, recording or otherwise without the written permission of Lorient Polyproducts Limited.
© Lorient Polyproducts Ltd 2019