

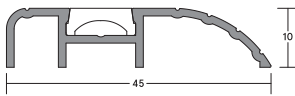
# LAS4015

## HEAVY DUTY

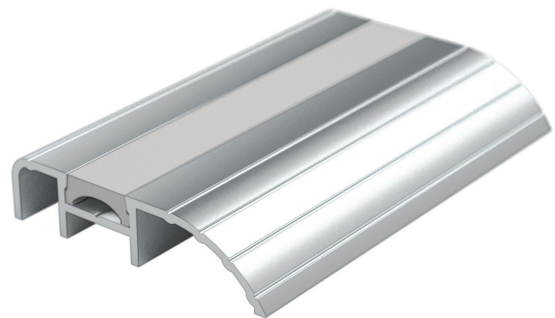
Heavy duty, aluminium threshold plate suitable for outward opening doors to prevent rain, draught and light. Can increase the effectiveness of threshold seals by creating a firmer gasket contact. Durable anodised aesthetic finish.



THRESHOLD PLATES + RAMPS



LAS4015



### SYSTEM SPECIFICATIONS

#### Performance

- ▶ Protects against sound, smoke, weather, draught, light and insects when fitted with a suitable threshold seal.
- ▶ Provides an even surface underneath the door; suitable for wheeled traffic.

#### Location

- ▶ Single and double leaf outward opening doors.

#### Use with

- ▶ Practically any drop or door bottom seal.

#### Material

- ▶ Aluminium and PVC cover strip.

#### Standard lengths

- ▶ 1m and 2.1m. Other lengths to special order.

#### Fixing

- ▶ Fixing screws are supplied.

#### Finishes

- ▶ Silver anodised aluminium with grey cover strip.
- ▶ Bronze anodised aluminium with black cover strip.
- ▶ Black and light bronze anodised aluminium (non-standard - charges and lead times apply).
- ▶ Other powder-coated colour finishes (non-standard - charges and lead times apply).

#### Accreditation



(R27972)