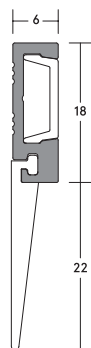


LAS3004 SI DOOR BOTTOM SEAL

FITTING GUIDE



LENGTH _____

CONTENTS

- LAS3004 si door bottom seal
- Bag of screws

TOOLS REQUIRED

- Tape measure
- Pencil or marker
- Knife
- Saw, hand or power
- Drill, hand or power
- 2.5mm drill bit
- Screwdriver

NOTE

It is not necessary to remove the door from its hinges unless otherwise specified.

STEP 1

Remove the seal from the packaging and measure the door width.

STEP 2

Remove the decorative cover strip from the aluminium carrier.

STEP 3

Pull back silicone gasket and cut aluminium carrier to required length.

STEP 4

Cut the decorative cover strip to the length required.

STEP 5

Slide silicone gasket back into position and cut to required length.

STEP 6

Position the seal to the door bottom (as illustrated) and mark out the slotted hole locations with a pencil.

STEP 7

Drill pilot holes with a 2.5mm drill bit (if required).

STEP 8

Lightly screw fix the length to the door bottom through the slotted holes with the screws supplied. Fixing holes are pre-slotted to enable the seal to be accurately adjusted as required.

STEP 9

Close the door and check for a uniform seal, adjust the seal if required.

STEP 10

Tighten screws and replace the decorative cover strip.

NOTE

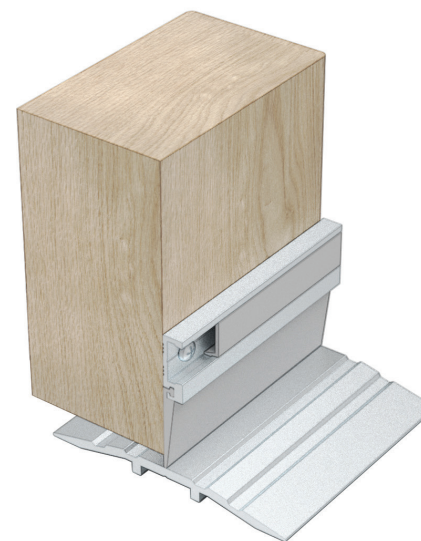
We recommend the LAS3004 si is used together with a Lorient threshold plate.

NOTE

Ensure that the installation of this product does not impede the opening or closing of the door. It is recommended to check the adjustment of the door seal periodically to ensure the door assembly to which it is fitted, closes and latches properly.

NOTE

Recommendations as to methods, use of materials and construction details are based on the experience and knowledge of Lorient and are given in good faith as a general guide and service to designers, contractors and manufacturers.



NOTE

Lorient reserves the right to make alterations or delete any installation detail without prior notice.

V2



Lorient Polyproducts Ltd
Endeavour House
Fairfax Road
Heathfield Ind Estate
Newton Abbot
Devon TQ12 6UD
United Kingdom

+44 (0)1626 834252
www.lorientgroup.com

All rights reserved. No part of this fitting guide may be reproduced, stored in a retrieval system, or transmitted in any means, electronic, mechanical, photocopying, recording or otherwise without the written permission of Lorient Polyproducts Limited.
© Lorient Polyproducts Ltd 2019