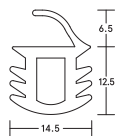


LAS1050/UL COMPRESSION SEAL FITTING GUIDE



LENGTH _____

CONTENTS

- LAS1050 compression seal

TOOLS REQUIRED

- Tape measure
- Pencil or marker
- Scissors, knife or snips

NOTE

Recommendations as to methods, use of materials and construction details are based on the experience and knowledge of Lorient and are given in good faith as a general guide and service to designers, contractors and manufacturers.

Lorient reserves the right to make alterations or delete any installation detail without prior notice.

INSTALLATION DETAIL

NOTE

Fitting the LAS1050 seal requires a 12mm x 12mm (min) deep groove. Min/max recommended gap size is door 2mm/4mm.

FITTING FOR PRE-MACHINED STEEL DOOR FRAMES

STEP 1

Ensure that all contact surfaces are clean, dry and free from surface dust.

STEP 2

Remove the seal from the packaging and measure the top and sides of the door frame to determine the seal length required.

STEP 3

Cut the seal to the desired length using a sharp knife or snips.

STEP 4

Starting from one end and ensuring that the gasket is not stretched, push fit into place working progressively downwards. Ensure the seal is positioned in the correct orientation - the curved fin is facing the frame head or jamb.

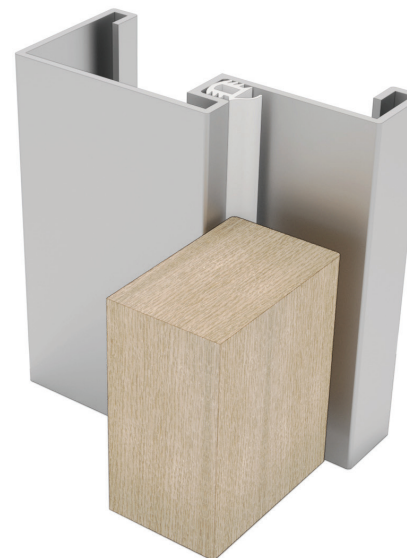
STEP 5

Trim off excess seal.

NOTE

Ensure that the installation of this product does not impede the opening or closing of the door. It is recommended to check the door seal periodically to ensure the door assembly to which it is fitted, closes and latches properly.

The seal may be cleaned periodically with a damp cloth and mild detergent.



Gasketing materials for fire doors intended for application to wood and plastic covered composite and wood core doors rated up to 1.5 hours. Listed steel frames and/or classified steel covered composite, hollow metal doors rated up to 3 hours.

V2



Lorient Polyproducts Ltd
Endeavour House
Fairfax Road
Heathfield Ind Estate
Newton Abbot
Devon TQ12 6UD
United Kingdom

+44 (0)1626 834252
www.lorientgroup.com

All rights reserved. No part of this fitting guide may be reproduced, stored in a retrieval system, or transmitted in any means, electronic, mechanical, photocopying, recording or otherwise without the written permission of Lorient Polyproducts Limited.
© Lorient Polyproducts Ltd 2020

For more information please call:

+44 (0)1626 834252