

COMPRESSION SEALS

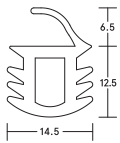
LAS1050

MEDIUM DUTY **45dB**

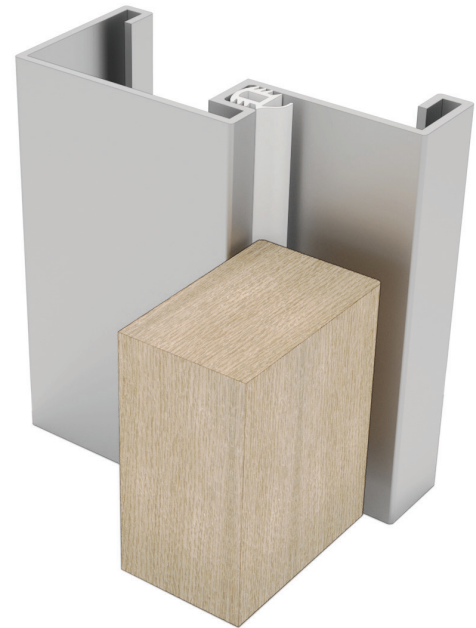
Durable, silicone compression seal for acoustic performance. Seal push fits quickly and easily into a 12mm wide x 12mm deep groove. No mechanical fixings/screws required.



COMPRESSION SEALS



▲ LAS1050



SYSTEM SPECIFICATIONS

Test evidence

- ▶ Acoustic: BS EN ISO 10140-2: 2010 (up to R_w 45dB).

Performance

- ▶ Protects against sound, draught and light.

Location

- ▶ Head and jambs of single swing doors.

Use with

- ▶ Practically any threshold seal.

Min/max gap size

- ▶ 2mm/4mm.

Seal material

- ▶ Flexible silicone rubber.

Standard lengths

- ▶ 100m reels.

Fixing

- ▶ Interference fit into 12mm x 12mm preformed steel door frame rebate.

Colours

- ▶ White, grey, dark brown or black.